



Gemeente Utrecht



The Utrecht Road Safety Label for primary schools

City of Utrecht, NL





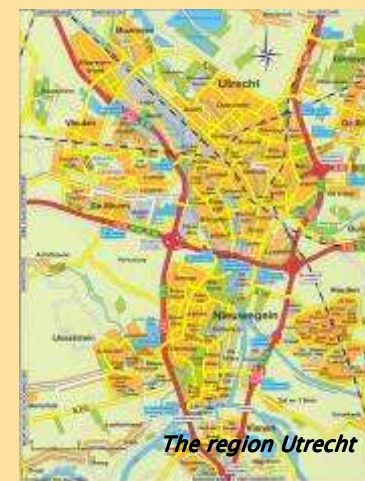
The City of Utrecht

Facts

- Fourth largest city in the Netherlands.
- 300,000 inhabitants (0–11 years: 41,000 = 13% of the population).
- Largest University in the Netherlands.
- 65,000 students in higher education.
- Most highly educated work force in the country.
- Building the largest new development in the Netherlands: Leidsche Rijn (80,000 inhab).
- Intersection of major motorways and railroads.

Modal split

- Motor vehicles: 31 %
- Public transport: 9 %
- **Bicycles: 33 %**
- **Pedestrians: 25 %**
- Others: 1 %





Roads in Utrecht

Road types



50km/h



30km/h

Roadsigns (official)



J21



J38



L2

Roadsigns (unofficial)





Primary schools in the City of Utrecht

Facts

- Primary schools in NL → children's age is between 4 and 12 years.
- Most of the children travel to school by themselves from the age of 9 – 11.
- Most of the children walk or go by bike to school.
- 24,000 pupils on 115 primary schools in the City of Utrecht ...
- ... means 115 different solutions to realise more roadsafety for children



2 schoollocations near 50 km roads



The Utrecht Road Safety Label (UVL)

Teachers think road safety is the biggest safety problem, bigger than other safety topics.

Many road safety problems are the result of the behavior of the parents.

The Utrecht Road Safety Label (UVL):

- Is a quality mark for primary schools that structurally put effort into the road safety around the school and into traffic education.
- In exchange the school gets money and support for traffic lessons and small infrastructure improvements in the direct surrounding of the school.
- Target: 80% of the primary schools received the label in 2010.





The Utrecht Road Safety Label (UVL)

A combination of 3 actions:

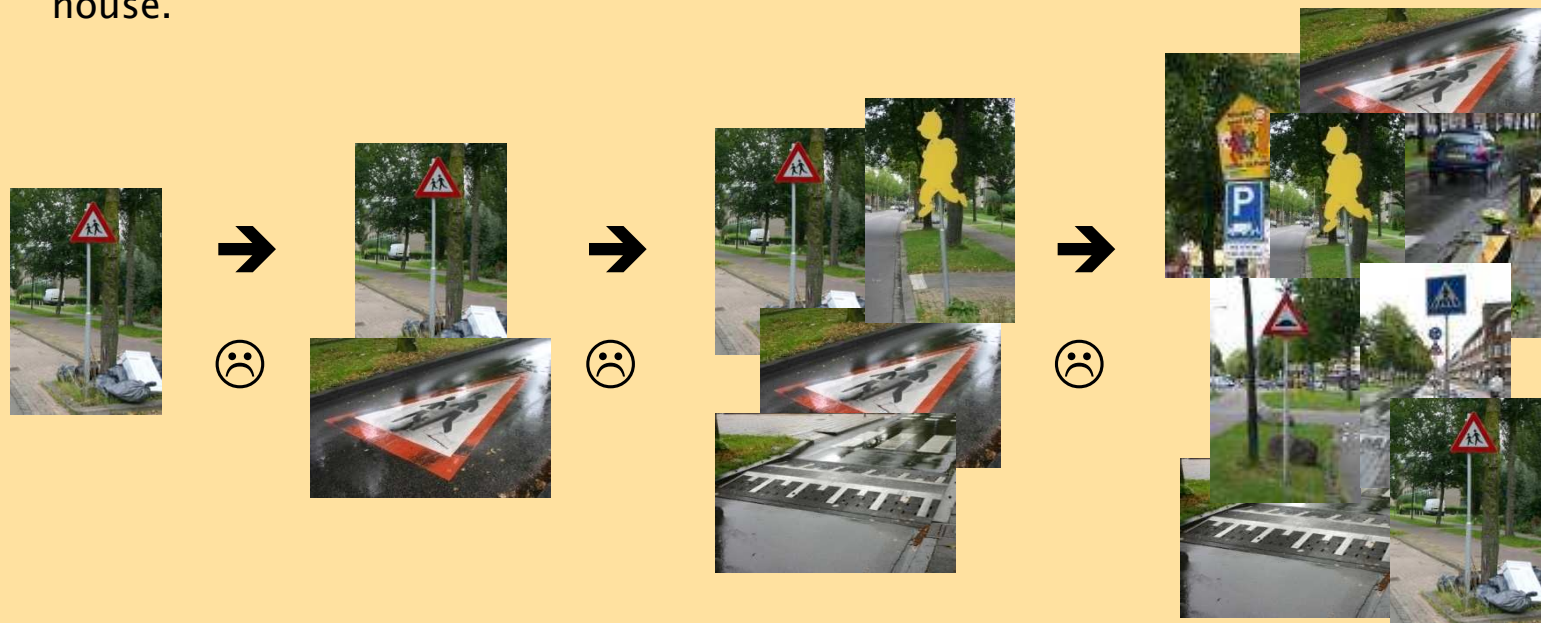
- Traffic – education for the pupils
- Influence on traffic – behavior of the parents
- Creating a safe school-zone



Finding a payable standard solution

The City of Utrecht doesn't have a standard lay-out for the arrangement of road crossings for pedestrians and bicycles.

- Most solutions are created for just a few short periods during the daytime.
- Comprehensive interest (through traffic, busses, emergency services, provision, etc.)
- Schools and parents nowadays expect that the (city)government guaranties the safety of their children around the school and on the route from and to the child's house.



Examples of solutions on school routes (1)

Furkabaan



PRESENT:

Standard roadsigns (J21)

Road markings (separate for bikes and pedestrians)

Traffic-island (not wide enough for a child with a bike)

MISSING:

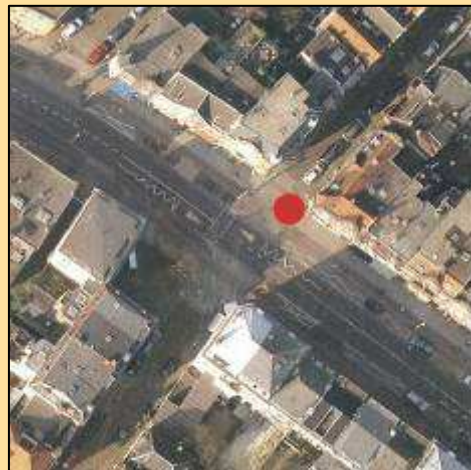
Speed control humps

Railings

negative aspect: Three specially marked crossings within 300 metres

Examples of solutions on school routes (2)

Nachtegaalstraat



PRESENT:

Road markings (thunderbolt + J21 in colour)

MISSING:

Standard roadsigns (J21)

Speed control hump

Traffic-island

Railings

Examples of solutions near primary schools (1)

Poortstraat



PRESENT:

Standard roadsigns (J21 + L2)

Road markings (zebra)

MISSING:

Speed control hump

Traffic-island

Railings (also in front of school entrance)

negative aspect: Bad visibility because of trees combined with a curve in the road

Examples of solutions near primary schools (2)

Jan van Scorelstraat



PRESENT:

Standard roadsigns (J21)

Road markings (thunderbolt + J21 in b/w)

Speed control hump (including zebra)

Railings

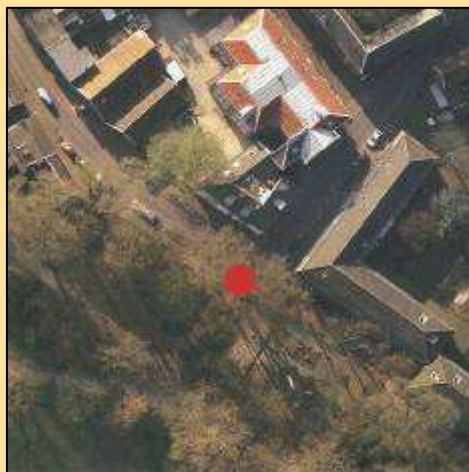
MISSING:

Traffic-island

negative aspect: Solution is not situated in main route to and from the school playground and -entrance

Examples of solutions near primary schools (3)

Wijde Doelen



PRESENT:

Railings in front of school entrance

Room for pedestrians and bikes in front of school entrance

positive aspect: No space for car-parking in front of school entrance

MISSING:

Standard roadsigns (J21)

Speed control hump



UVL solutions



| school route | | |
|---------------------|---|---|
| school zone | + | + |
| school route | | |
| school | | |



Opening first school zone





Opening first school zone





Opening first school zone, situation before





Opening first school zone, situation after





Gemeente Utrecht



Thank you
for your
attention!

April 2009, Ronald Tamse / Ruud Ditewig
City of Utrecht, The Netherlands